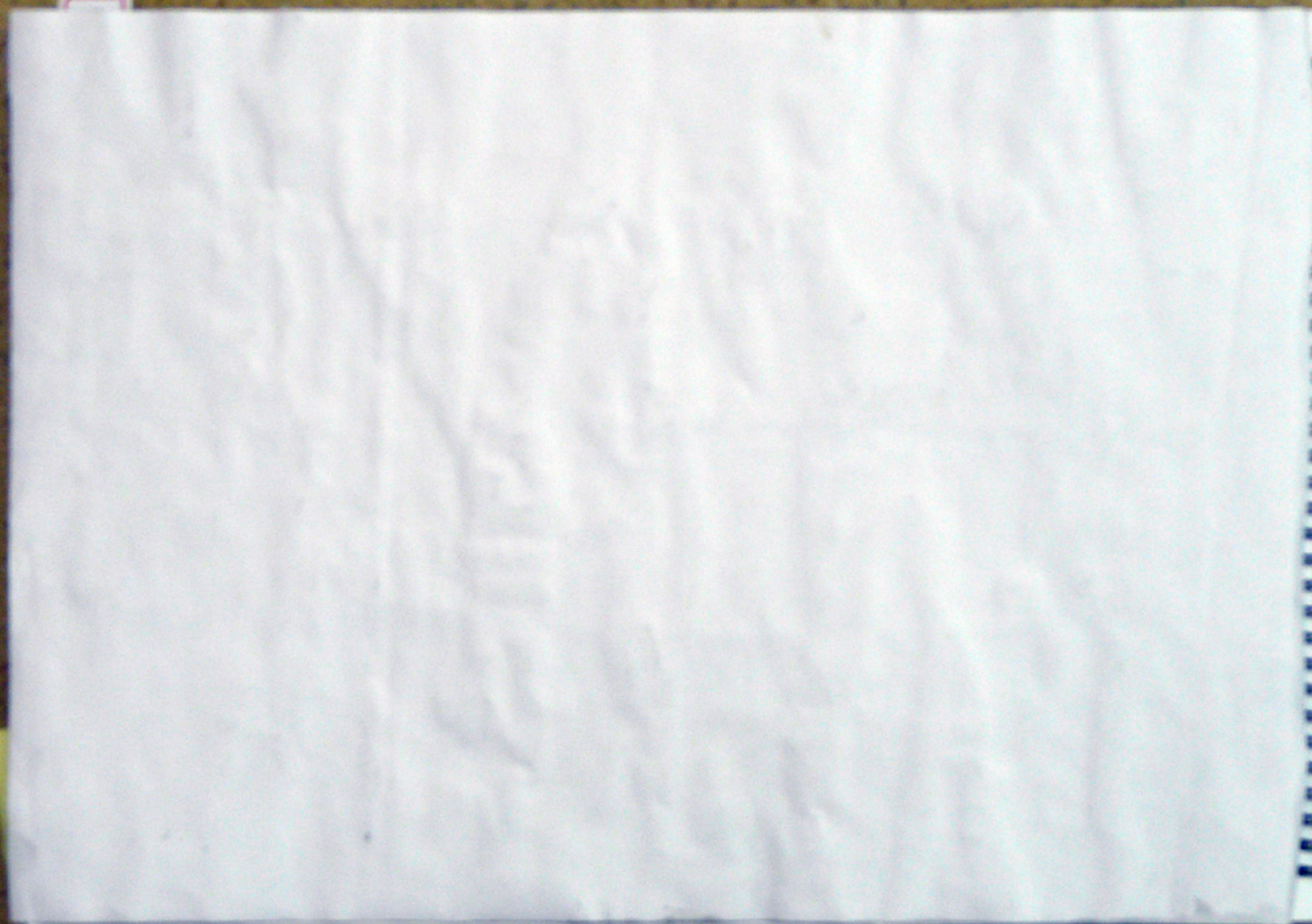


CONCEALED  
REVEALED

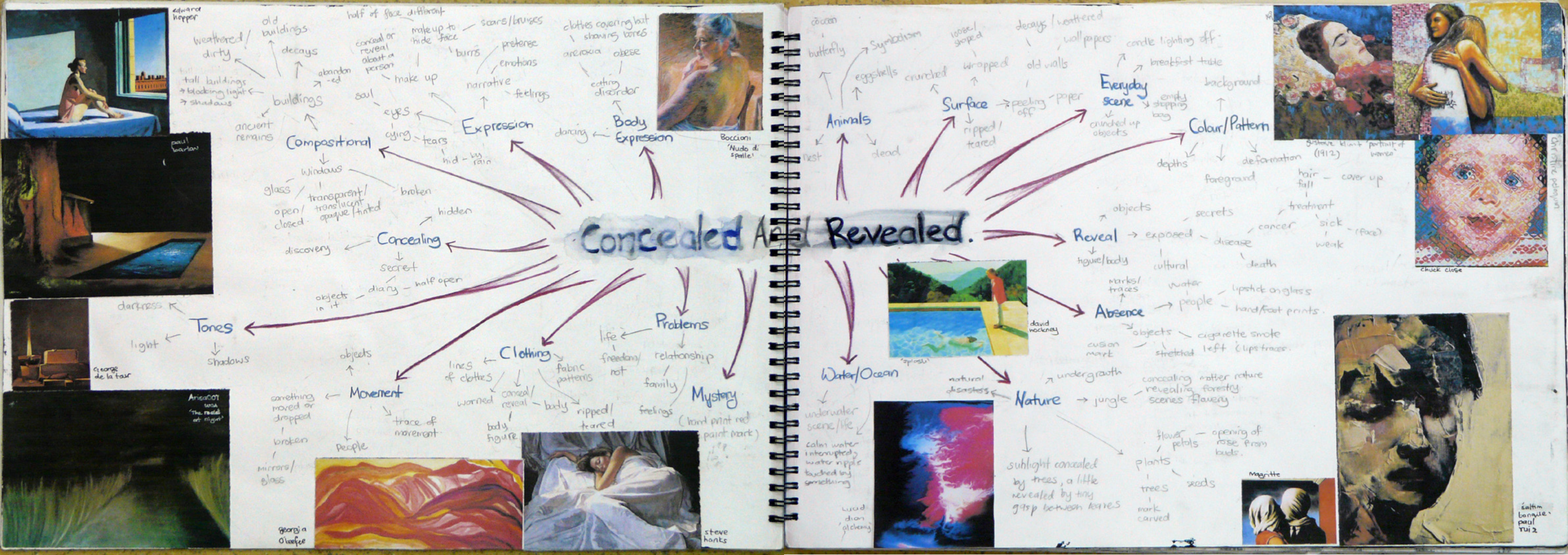


Name: ABDUL HALIM Hannah  
Candidate No: 6571  
Centre: Alice Smith School 94622  
Syllabus No: GCSE 2AD01  
CSWK 5AD01 EXAM 5AD02  
SHEET SKBK OUTCOME #









Edward Hopper



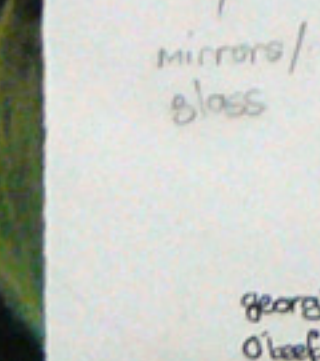
Paul Barlow



George de la Tour



ArcaCOT 'The Road at Night'



Georgia O'Keefe



Steve Hanks



Boccioni 'Nudo di spalle'



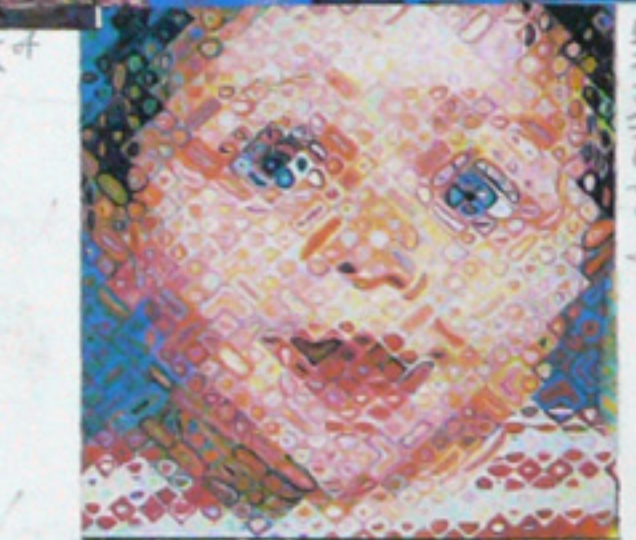
David Wockney



Lud Dion 'Alchemy'



Suzanne Klimt 'Portrait of Women' (1912)



Chuck Close



Salim Bouhassine, Paul Tui 2



Magritte

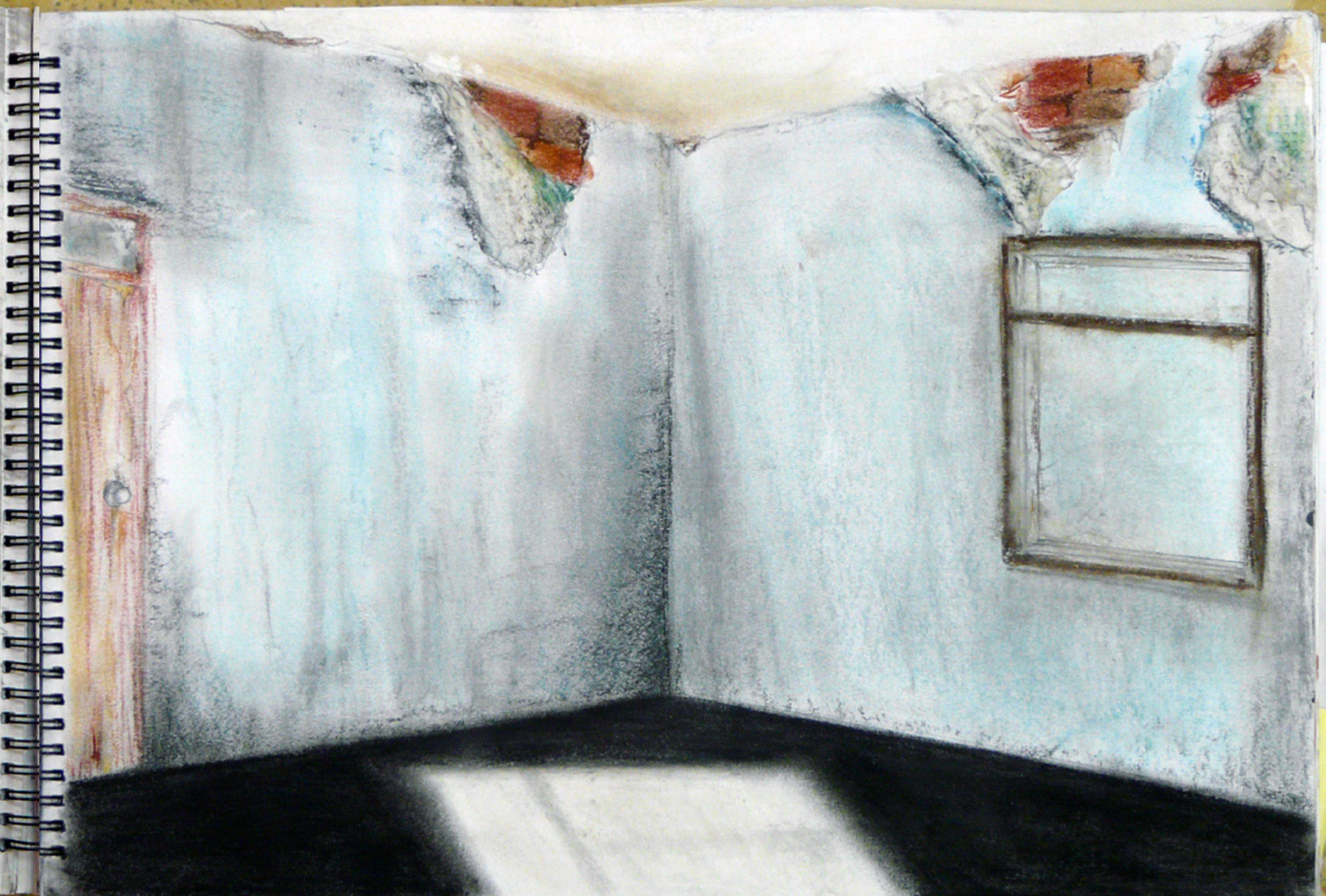




A house can reveal a lot about someone as much as it conceals their personality or life. I decided to do this painting because I find appearance of a house is an interesting way to look at a person; whether a house is big or small, new or old it gives the idea of who a person is. I chose to do a composition of dull colours and an old house; the mystery of an abandoned house can conceal what has happened in it. The door is left open; it makes you wonder if there is someone in there or is it just left open. I applied the same colour palette to the wall and door to enhance and emphasize the theme.











Visual Brainstorm

This is a response to George De La Tour. This piece focuses on the lighting intensity on a curtain which in certain parts, add depth to it. George has used a candle to show how light can affect objects; either concealing or revealing. As the scene is lit, the light decreases concealing the other surroundings around something. It gives the mysterious feeling to what lies behind the curtain and or what it covers. Red is used in my paintings as it adds more poignancy to the paintings as it can symbolize warning, danger or something important.







I have this idea on looking at how an environment can somehow reflect your act or emotions so I decided to do a watercolour painting on showing how a very basic background in a situation can

tell much about a person. In this painting there is blinding colour which represents the mood of the person. The color can symbolize that if it is a relaxing situation but the way he is sitting, he could be concealing something very subtle like the background but it needs an opposite message

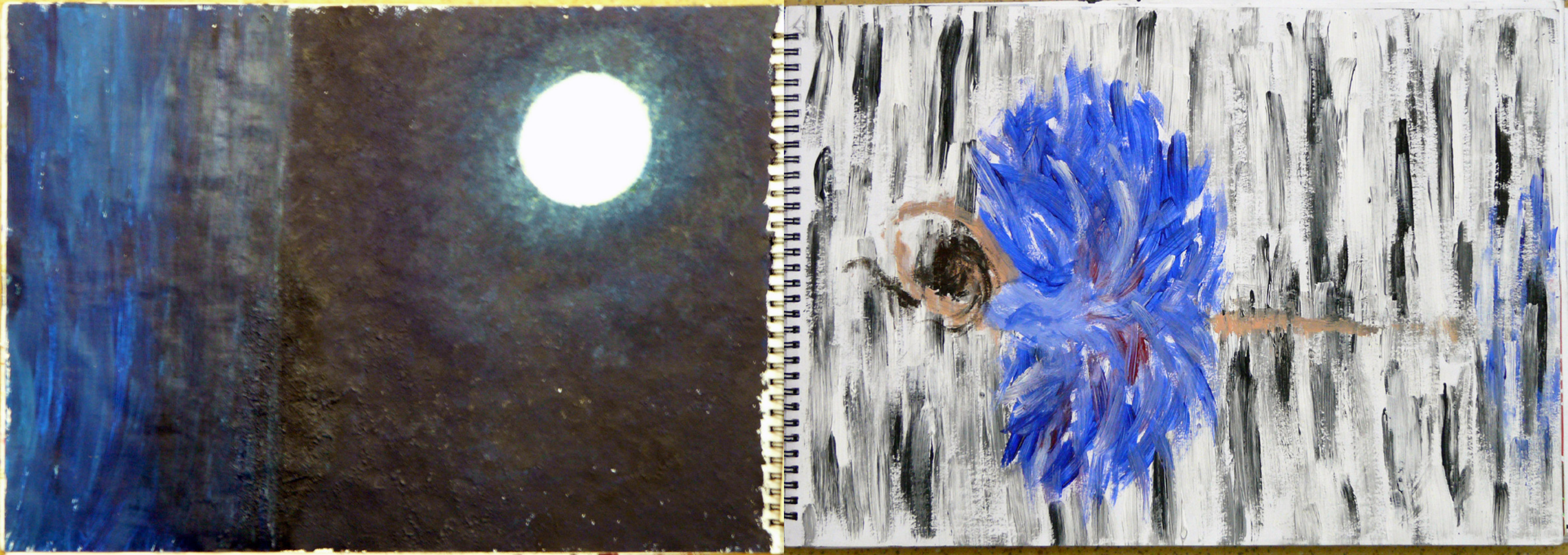
This is a portrait of my cousin I drew because I was interested in the reason behind why she wears her scarf and conceals her face. Her eyes look this shows a story whether she was made to wear the scarf but this also conceals what kind of a person she is as this was made her very reserved















Paul Ruiz  
'ausencia humana'

In his drawings and paintings, Paul Ruiz explores the idea of ausencia humana, conceiving human studies in the absence of human subject. To explore it is to find a unique story, memory and imagination and reality. In responding to Ausencia I have decided to do a piece that I think illustrate those elements. Paul Ruiz has layering technique in this painting with different colours. This can suggest that maybe he wants to conceal a layer or expressions with another color of more for the expression. His works have been made with a range of media; charcoal, pastel, acrylic or oil paints. To make it vary each surface is layered, scraped back and layered to give the process of seeing and responding to human subject and thinking.



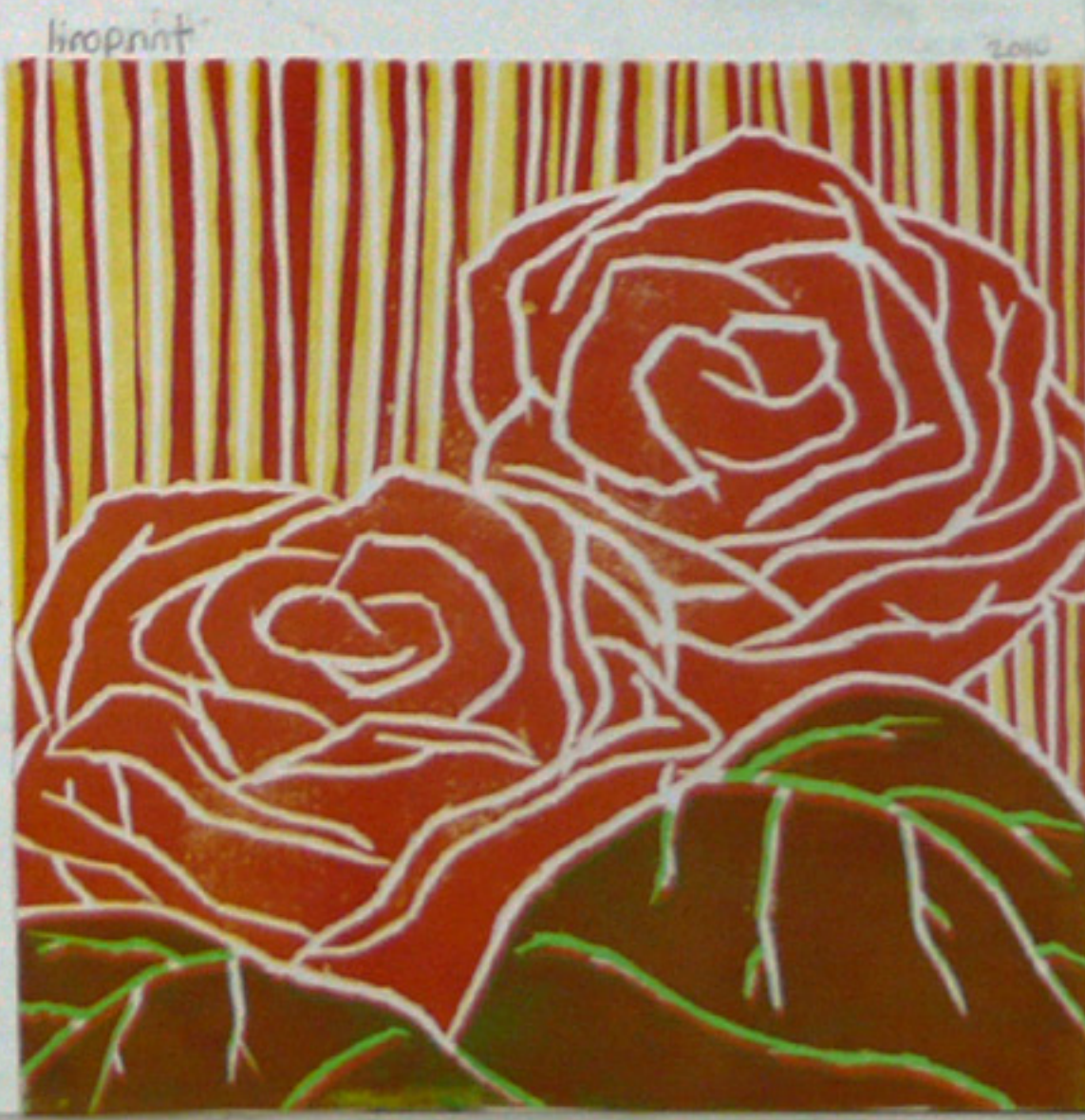
amber summer  
Paul Ruiz

In this linoprint, I am exploring how layers of colors can conceal the visibility of certain colours. Different coating of colors can also reveal and form other shades or colors. In this print, a yellow paint is put on first as it is the lightest colour. Darker shades can overlap or conceal this.

I chose this painting by Marise Tomlinson because I like how she uses a varying techniques which creates an interesting piece to look at. The different marks and strokes used creates a sense of chaos and confusion and tonal value is added so it strengthens the composition. I like how the scatters of patterns build up and forms an image of two faces concealed by flashes of some kind of wave of things that are reflecting them and this brings depths to the painting instead of just a splash of scattered patterns.



Marise Tomlinson  
'conceal & reveal'



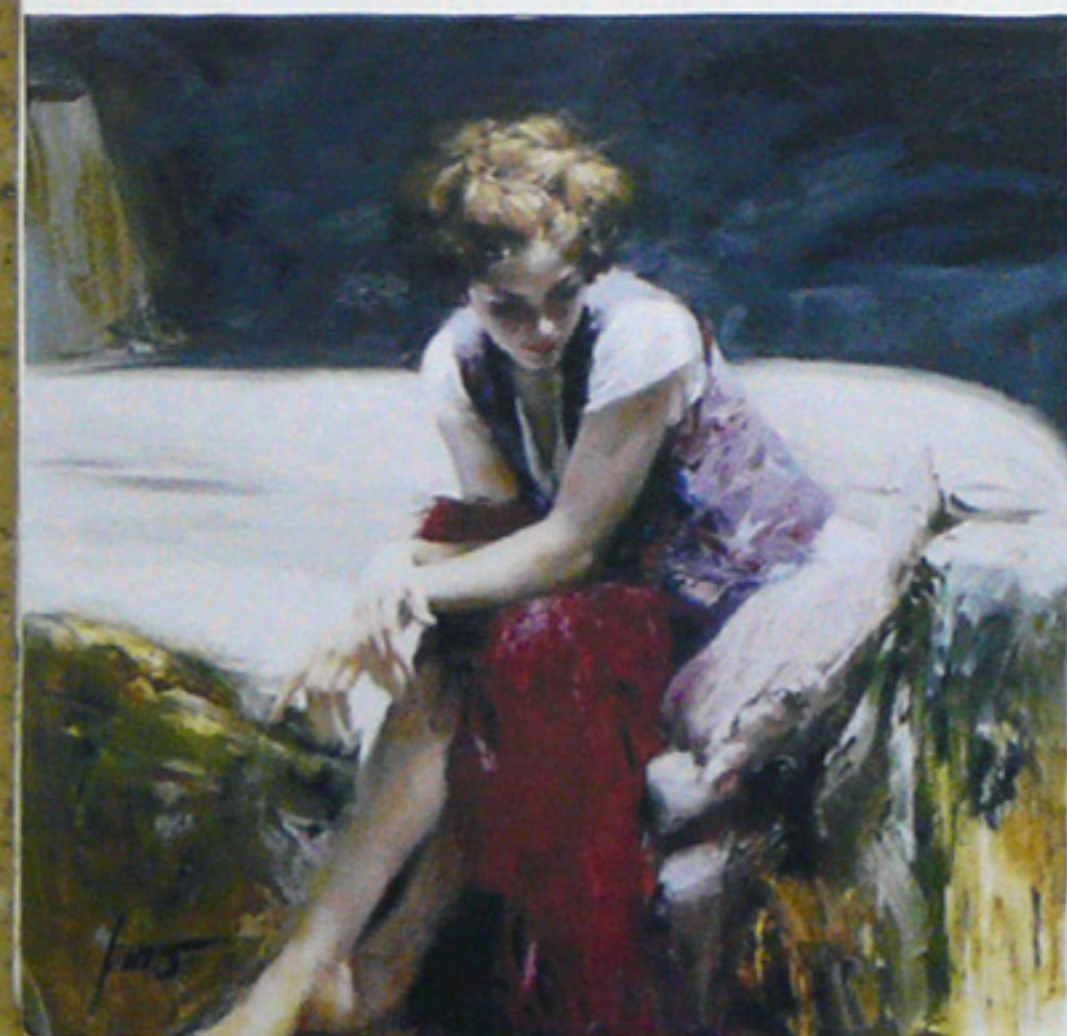
linoprint





Lucid dion

First thing that I noticed about this piece is that I like the range of colors in it, very vibrant, it reminds me of nature and the seasons. The bottom section looks like as if it is flaming fire and at the top, lightning is occurring. This suggests a powerful piece of painting because it creates the sense of strength in the imagery. Alternatively, you could also see that the upper part is like a cooling surface, or water, contrasting the flames as if mother nature is soothing then water calms it down. It makes me think of how all the elements of mother nature coming together to create some kind of a battle or fusion, and then it formed some sort of lively god-like imagery. I like how the artist here used technique of mixing the acrylic ink drip and also uses texture in the lower part of the piece which adds to the surface texture that makes it interesting.



Rno

This painting by Rno creates wonder about why is the woman painted based on her body language. It could be that she is waiting for something (looking at her expression). Her body expression shows femininity or maybe she is weary. I'm interested in how the way she is sitting it looks as if she is blending in with the furniture.

I like this piece because Madism Moore has used the technique of combining two images together to create a painting which reflects the meaning. Butterflies are always stuck to a flower so in this painting it shows of how it is nature that butterflies go on flowers that it almost look like one of the petals.



Yntaun work

I did this response to this painting I found in the world of art source because it made me think of way to paint watercolour as it doesn't always need to be exact and refined but you can also just paint it outside as it creates a more tranquil picture. It can also form a fleshy movement as I described that I can relate this to lyrical movement. It doesn't have to be refined which is what makes the painting more lively and the colors blend with the background and atmosphere.







Cezanne has used very dark colour palette in his painting. Darkness can conceal objects and only revealing some things that light has shone on. Darkness also conceals details. In this painting, the wonder of nature is concealed only revealing the building and some reflection on the water. Cezanne has used the rule of thirds for its composition. And the tree on the left takes up half of the painting, concealing what's behind it.



Jenny Saville's paintings are all meant to focus attention to physical appearance and the general idea of what some people consider as grotesque. In her painting, her body is exposed and this reveals to people what she wants them to see, the imperfections of a human being. There is a strange discomfort in the way her head is tilting back to the side. It makes the image more engaging and troubling. She has also used mark making and impasto and this can relate to the way a female body behaves.

margaret dyer  
'anast-in red'

This sketch is done with soft pastel in Margaret's 'small pastel studies' subject painting. I find this painting somewhat calmly unsettling; women's gesture and position as she is facing backwards, and it looks like she is waiting for something or someone. Her red lingerie tells something about her, red symbolizes warning and dangerous. Can she be hiding a secret. It reveals something about her personality but by the way she is facing that conceals her identity from us, maybe Margaret has done it purposefully. Her body composition reveals about her age that she is a woman, dressed up. The surroundings in this painting is very dim. It adds to the sense of mystery as to what lies behind this image.



I like the pastel colour palette used by Kent of how the whole composition is filled with very misty color but shades of blue and red is used creating contrast and dynamic to the painting. He also has brought in those colours from the hat to the background. This puts together the image. The picture is misty. The use of brush sort of conceal what is surrounding the figure but reveals the expression of the body.



Jenny Saville  
'self portrait  
1991'





This idea is inspired by a tree bark I saw  
somewhere near my house that at first glance  
looked like a body figure. So I decided that  
it would be interesting to do a sketch of  
the image I see in my head after seeing it  
and idea on suffering came. A tree has lots  
of wrinkles and interesting textures.  
It is like a story of a person  
suffering and is stuck with  
it no escape so she is stoned  
and carved in the trees, not  
moving forward. A tree can  
symbolize this as it is  
stuck to the ground  
with its root, you  
cant get it out. So  
this suffering is  
revealed by the  
composition of the  
tree and it is  
eternal, but at  
the same time  
it is concealed.



I wanted to experiment on a color  
what it can tell about structure and lighting.  
what it conveys on mental about human. I wanted  
to tell the story of a person who is suffering.









This is a response to Allison Watt of cloths I find the idea of how slits can conceal or reveal things and their shape very fascinating. I also want to experiment with drawing fabrics. The tonal shading is very fun to do. I have use monochromatic color schemes. I find it interesting how different slits has different depths to them.





body expression  
 showing emotion  
 emotion/situation + colour symbolism  
 portraits(?)  
 Double meanings  
 absence  
 Symbolism - work on more facial expressions + symbols/figures  
 expressions + object as symbol  
 surrealism  
 gustave Klimt  
 objects/human linked together that it looks like it is a part of each other  
 picasso



Photos taken to explore more on the theme conceal and reveal. I've focused lightings, nature, and blurriness of how they express conceal and reveal.



Photos taken by me

Strength

Review

Different materials

Brush style  
 using cards, ends of pencils, etc  
 palette knife to explore on different texture and effect different tools has created.

Try work more on different surfaces and use other materials instead of only painting on the artbook.

Ways forward

Other mediums & techniques

abstract - contrast of different images



- watercolor
- technique using palette knife has improved
- better ideas of theme (conceal and reveal)
- shading

body language  
 dance - movement  
 cloth/fabric  
 animals



Using colours as symbolism; to express different emotions or situation using colour symbolism or to reflect something

I think my strengths in watercolour. I want to explore more on different techniques that can be done with water color and also this birch tree painting. I want to capture the sense of soft and delicateness of the mystery subtly hidden behind the forestry.



what I'm bring's forward, birch tree watercolor representation to explore







I have this idea of combining two images together to explore how they can conceal and reveal about each other and if there is twist











## K. Madison Moore

I like the composition in this painting as it simple but yet very strong. shade of blue is used for the background to reveal the light in this painting. The way the figure has put her hand is concealing her body and this shows purity despite her modesty. Blue usually represent calmness but it also represent sadness or depression and this reflects the foreground --

This painting is a part of 'Enlightenment' series of paintings. Moore has used colors to represent the 'light' in the background as for her 'enlightenment'. It's interesting how the body position is put like that as it shows the spiritual emotion that she was felt and the hand gesture shows peacefulness in her 'Enlightenment'.



This is a painting I did as it respond to the painting 'solitude'. In the painting, the woman's poise and her position shows that her body is relaxed but at the same is tensed. And her face is hidden, it emphasizes more on her being lonely. The title explains all. The way she is curled up also shows her tenderness. The brush technique used is very soft, and this emphasize on the scene.

K. Madison Moore explores figurative and abstractionism in her artwork. The technique she use for her paintings are painting with light and dramatic beauty of natural form to create emotions. The artworks and technique have influenced me to experiment and explore more on how the use of light can conceal or reveal a certain angle of expression or emotions. I also like the idea of using dramatic body languages to convey certain emotions where it also conceal and reveal a person's personality.

I decided to use palette knife for different effect on giving rougher image to the figure, to see the different effect it gives. I make the figure that pose to reveal her emotion but at the same time concealing it, as the figure is facing backward and hidden in the shadows. But the position is more dramatic as it shows how much more emotion it reveals.







For my final piece, I have an idea of doing figurative expression influenced by R. Madison Moore as how body language can reveal or conceal about someone's identity. I find it interesting how hiding face can conceal someone's emotion but at the same time it reveals if someone is feeling sad or depressed.

Edward Munch  
1913  
'secret'



I am linking my drawing to Edward Munch's piece 'secret' where he has used interesting suitable figure to capture the message of his drawing. The tonal value in this also tells and links to the title 'secret'. I find it interesting how dark tonal value is used to conceal and hide the story behind this figure's secret, which works very well as it almost covers the face and expression whilst also revealing the mystery of the figure.





Kristin Kane



'Cycle of Life' is a part of series of paintings exploring the relationship of living things. A woman figure is stuck to a tree and her arms are spread out between branches, which suggest that she is reaching out to the world outside to find freedom. I find it interesting how the branches are soft capturing the moon as if to take it in. There are lots of roots connecting to the figure. This reveals about her roots and experiences.



'Sister Squamish' 2000  
'Arbor Life' 2002

I like the choice of color in this painting as her wonderful expressive has vibrant colors as symbolism. The woman figure in the tree is stuck to the tree with a lot of branches which are almost scattered and are red, which symbolizes warning or danger. This contrast the blue of the background which is calm.

Kristin Kane's art is about the strong connection between humanity and nature. Here represent her thought through symbols which surfaces throughout her work. The themes include the cycles of life and the spiritual essence of being human. Kane has influenced me to combine body figure expression and trees together as a picture to explore more on how emotions or perspective can be revealed through symbols or movement of nature.



Lisa Fifield

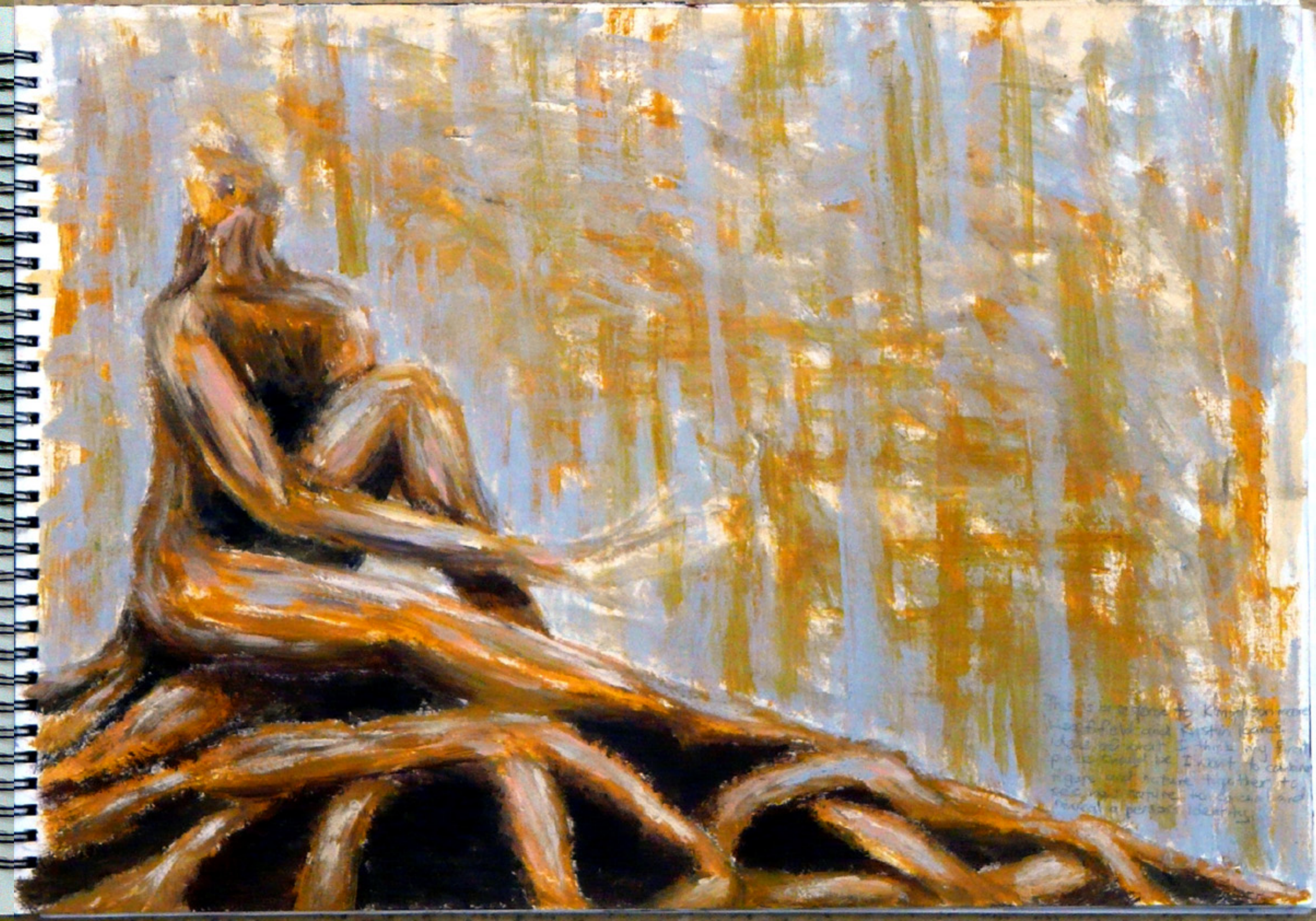
Lisa's work is inspired by native artifacts. She has put images of native dress, bead and quillwork, native and doll. Her portraits of tribal women are so intimate that she has used native's movement to conceal it and reveal the expression and feel. I like how she also uses birds and animal imagery to portray freedom as opposed to being tied and stuck. Birch This has inspired me to bring opposing idea of revealing woman's emotion to sun face.

Birds work woman is a very wonderful piece. It is very free and calm. The colors used are all natural which adds to be calm. The woman's posture reveals freedom as the arms are spread out. The flying birds and falling leaves add to bring her life to the world.



I like the choice of color Helen Hide Bird is a wonderful expressive painting that shows pure beauty communicating with nature. It shows peace and peacefulness. The way her quilt is flowing with the roots floating with the bird, it reveals freedom that the cloth is concealing on her body and her expression.

My final piece will have surrealism in it influenced by Lisa Fifield's paintings. This reveals more and give more dynamic to the effect. In trying to portray in my painting. The trees also symbolizes nature, this gives more life to the painting as it combines with other image and have deeper meaning to it and it is a more stronger piece and is more interesting as it creates depths.



This is inspired by Kristin Kane's work and I think my final piece will be I want to combine the two together to see how nature and emotion reveal a person's identity.



# Trees.



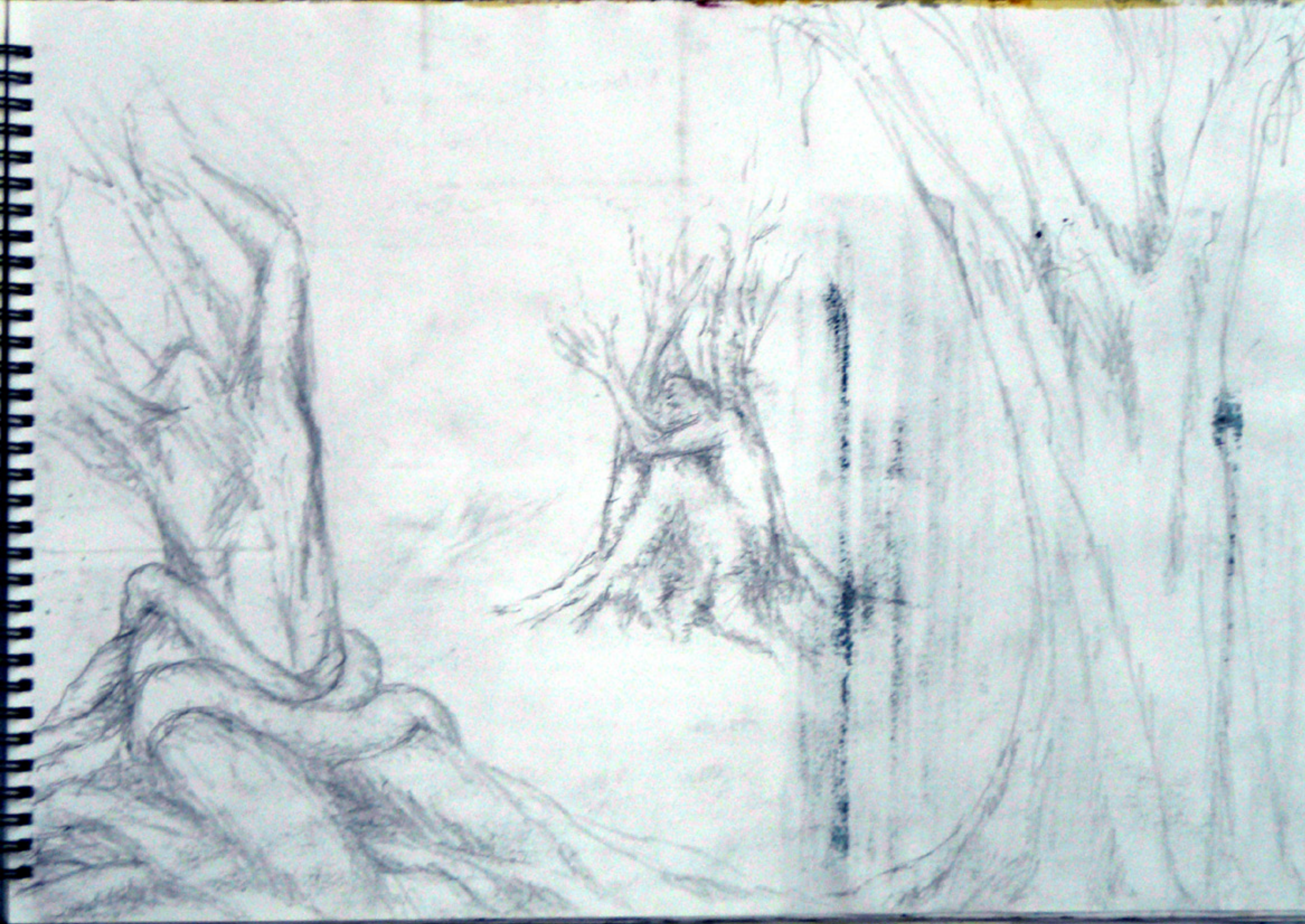
Trees can symbolize many things such as strength, but it also symbolizes life and emotions. The creases of a tree bark can reveal aging and on a person can reflect experience.

The body of a tree can represent a body figure.

I have decided to link the idea of doing a woman's figure that reflects emotion concealed in the image of tree bark or

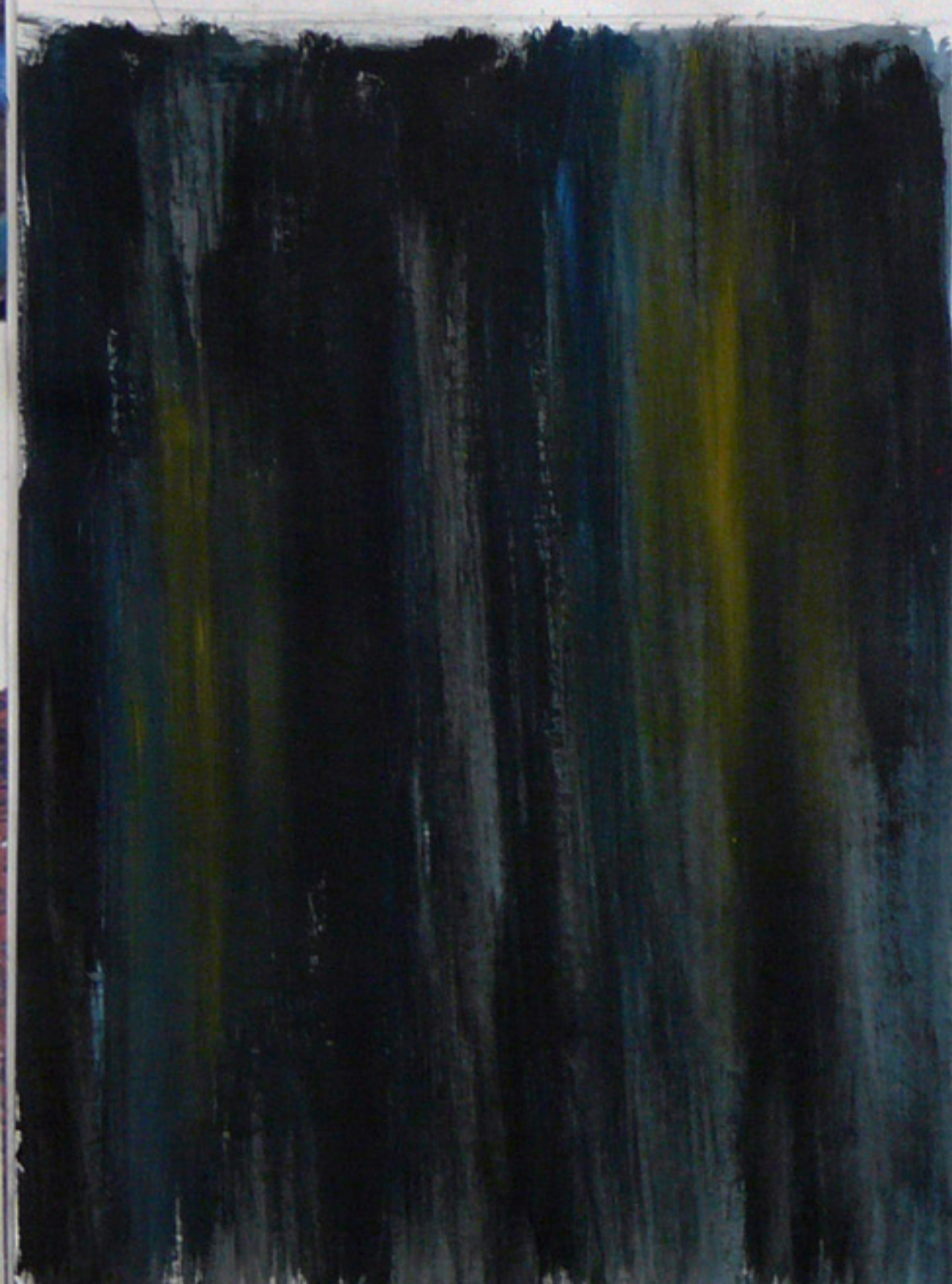
roots to add more dramatic features to the emotion. The creases also

either conceal or reveal what is seen





# Backgrounds



I want to see if different styles of background have different effect on the image. I have used warm colours vs. cold colours to see which will merge better with the figure and roots. In my final piece, the painting will portray sadness and solitude. I think the colour blue will blend better as blue can symbolize cold and loneliness. I think a hint of a warm colour should be added such as yellow or red as it contrasts the coldness. This is to enhance the image and I also want to bring the colour from the tree to the background so it blends in better. I try to get monochromatic blue colour adding white and black for different shades to make it interesting. And I have used grey mixed with the blue to tone down the background as it gives better blend.

# Composition



Color symbolism is used; red represents suffering and is used as background to reflect on the image.

Experiment I did on canvas I don't want my final piece to have defined body features as that goes against the meaning purpose of concealing body expression and emotion through the movement of tree bark.

Rule of thirds will be used for composition of my final piece as the composition will be more proportional.

Dark background was more interesting feel towards the painting as it reveals more of the lighter foreground.



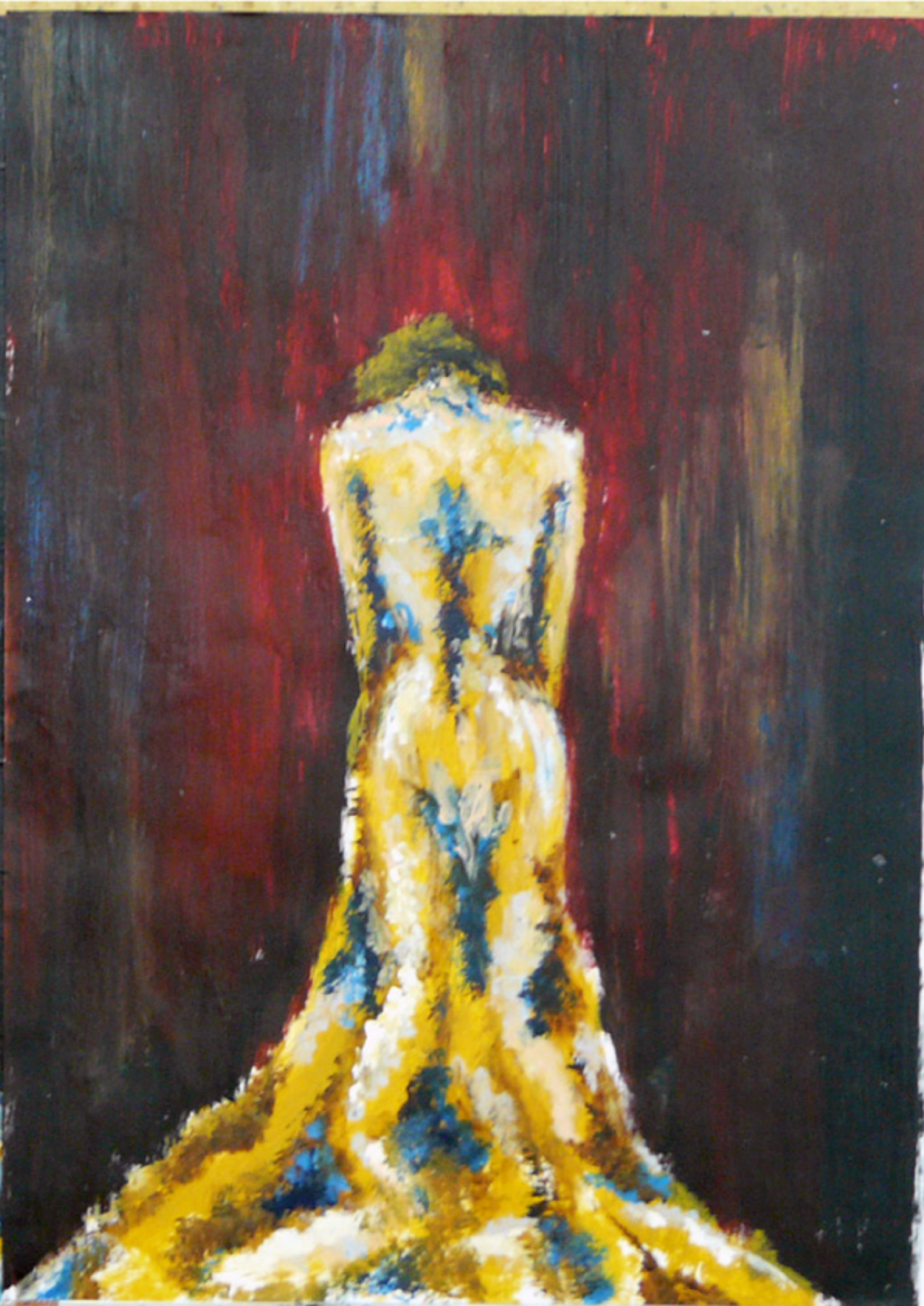
Body expression is sad, suffering; as this gives more dramatic emotion to the painting. The tree roots makes it surrealistic, as it combines with the body figure creating more meaning.

Face is hidden to see if using only body figure can express the emotions.



I choose composition 2 for my final as it shows more emotion and gives deeper effect although simpler than other composition. It conceals more of the appearance but at the same time it reveals deeper emotion so what lies behind the expression.





## Composition of final piece



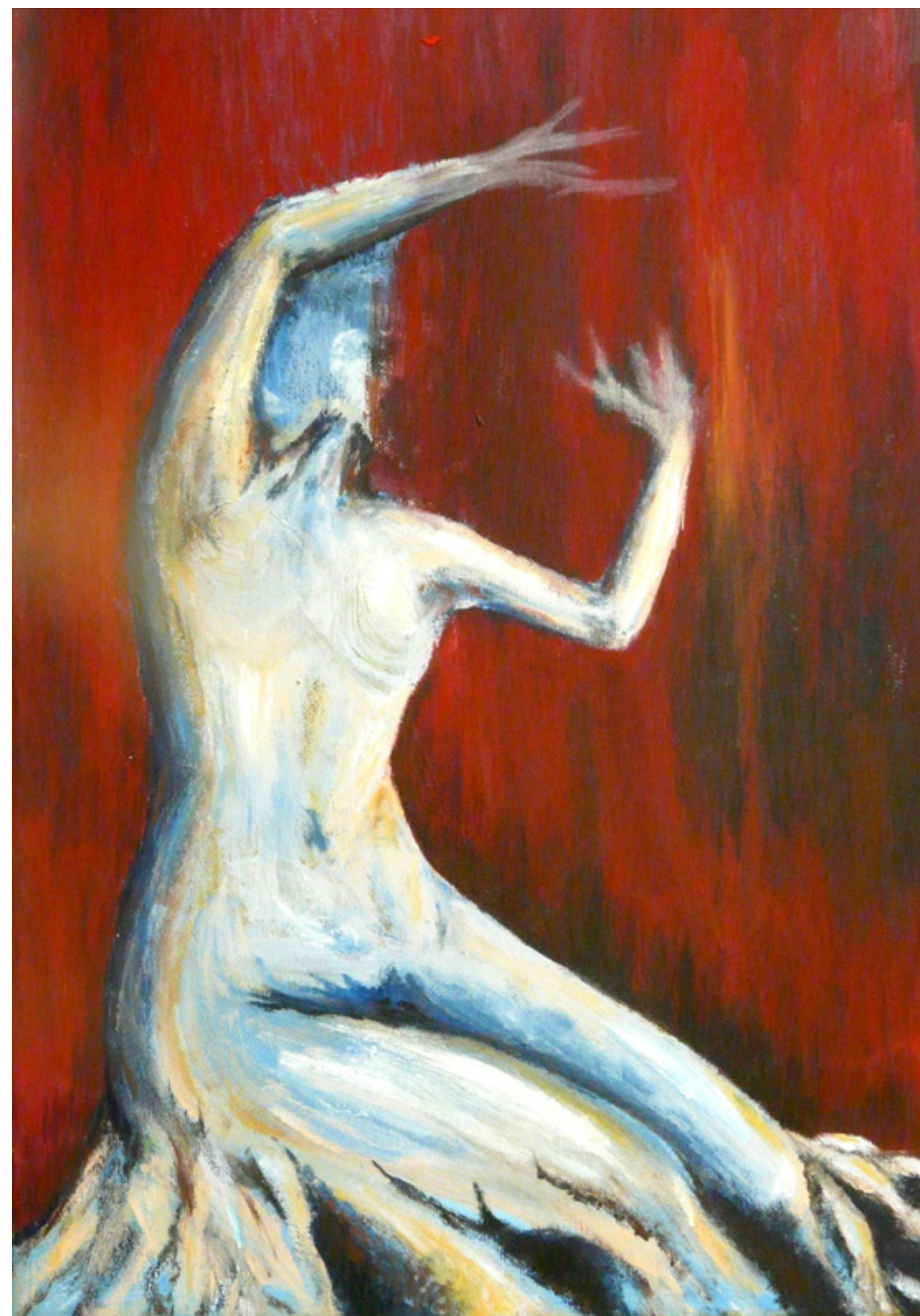
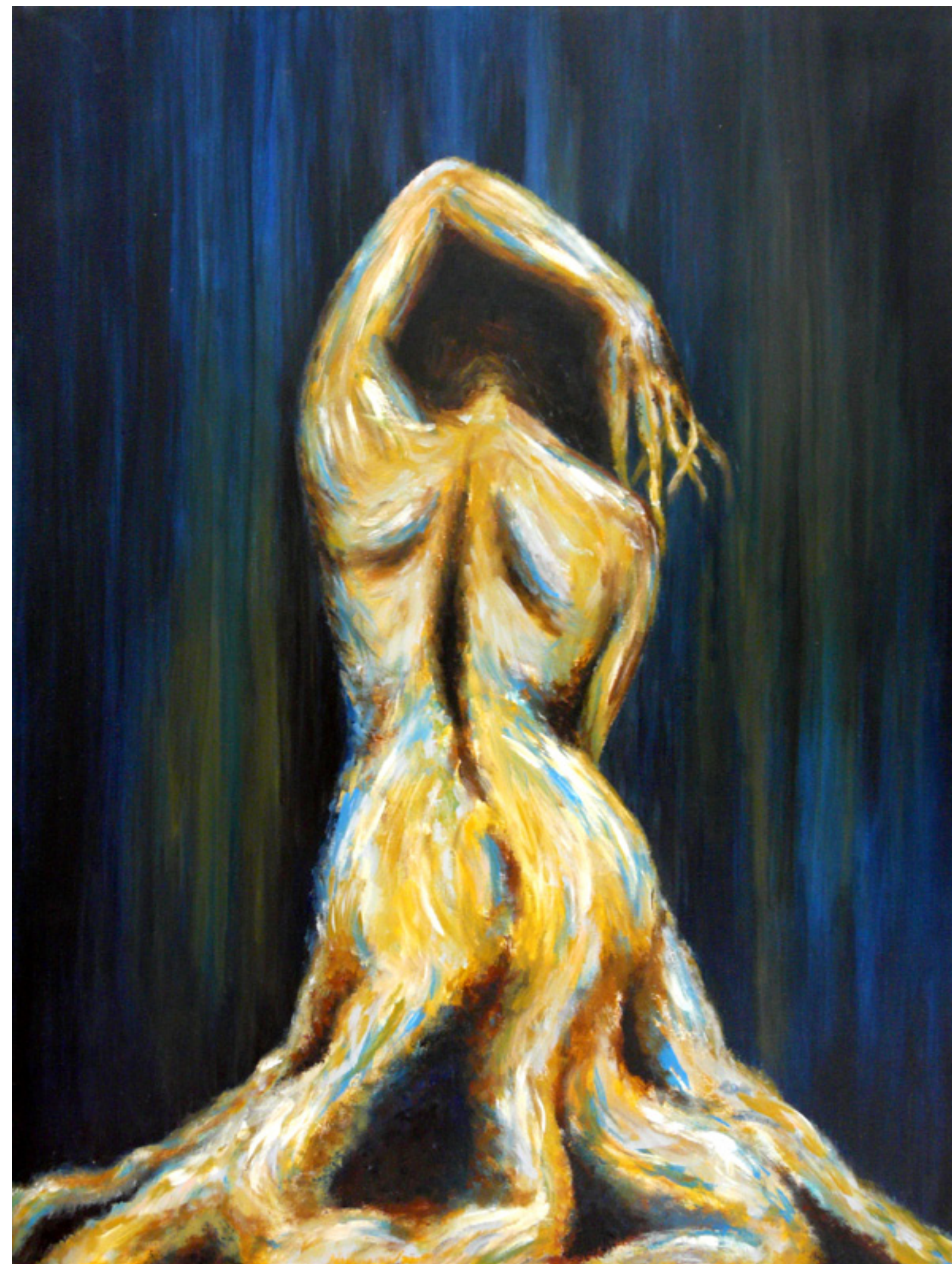
Roots are like your background. It reflects your personality of how you are from your past. In this final piece, roots will half-cover the figure of a woman as they combine in a surreal way in which to reflect the body expression the figure will project, which will reveal the woman's emotion through her body language. The way she is stuck to her roots, facing backwards, it is as if she is concealing herself from people seeing her life. Her arm is put over her head; this reveals the burden inflicted in her towards the painting even though the gesture is very simplistic. The defined line of her spine shows how deep she is hooked in this roots of hers where she has no escape. As if she is stuck for life in her misery. The background shows the darkness of this image, with only a hint of colors as the light surrounding her.



I chose this figure for my final piece because the posture of the figure gives more meaning; it conceals her appearance, but it reveals more emotions, and it defines loneliness, depression or maybe 'a wait'. The way modernism more uses body language to portray emotions, this has influenced me to give an image of a figure reflecting how she feels.







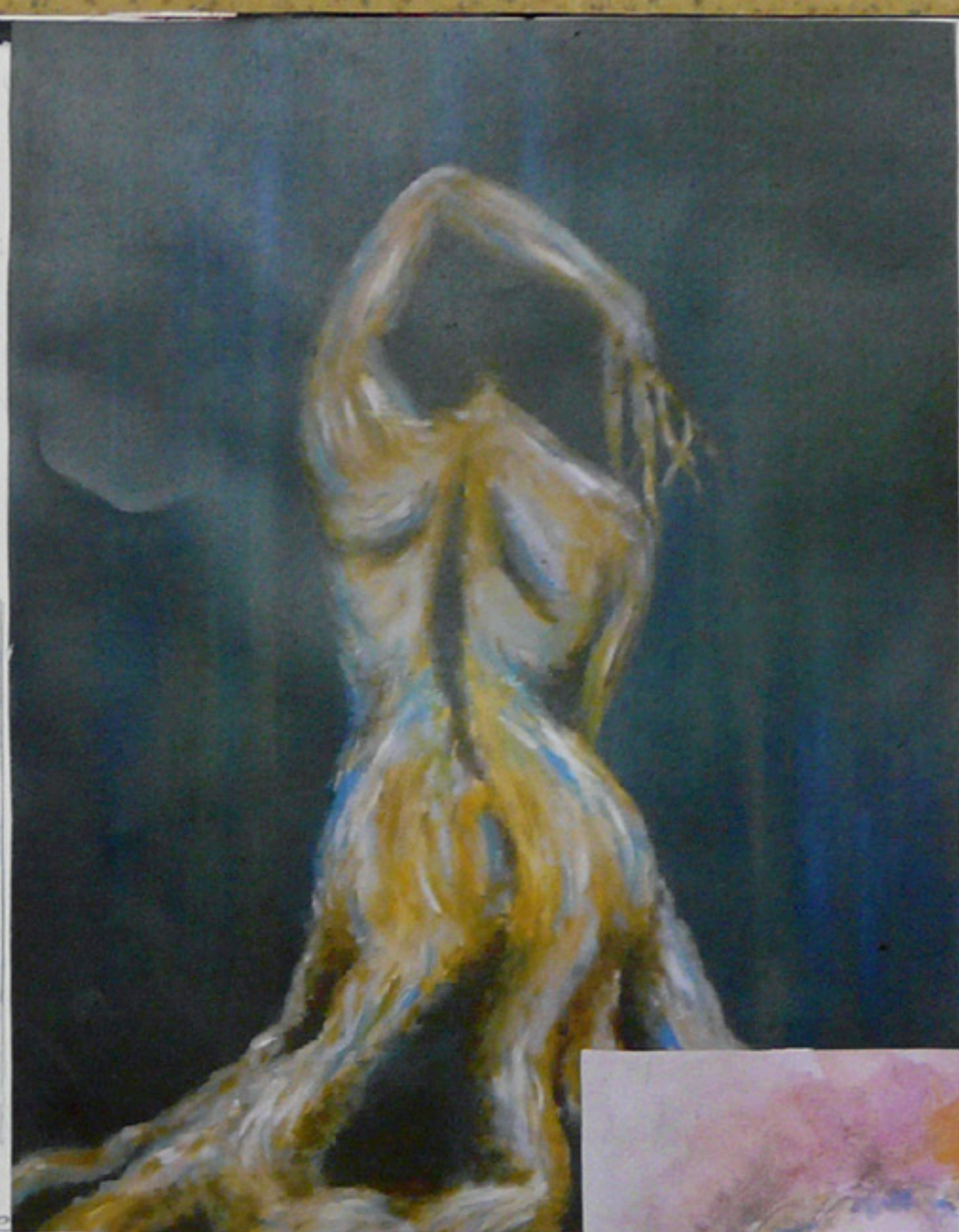


After experimenting with acrylic on the final piece, I decided that the paint is too heavy and the composition is a bit too simple that it defeats the purpose of the painting portraying strong emotion. I want to try different composition and experiment with other medium such as watercolour and explore other technique to enhance the composition for my real final piece.

what I'm bringing forward from my experimentation from earlier on →



I decided to bring forward this piece because combining this technique of painting will create a nice balance with the figure. I want to create a soft and delicate effect to the scene. The way the trees goes towards the background on how it merges and blends in with the background it creates nice subtlety. The scene looks mysterious but calm. This will have better impact if combined with the figure for the final piece.



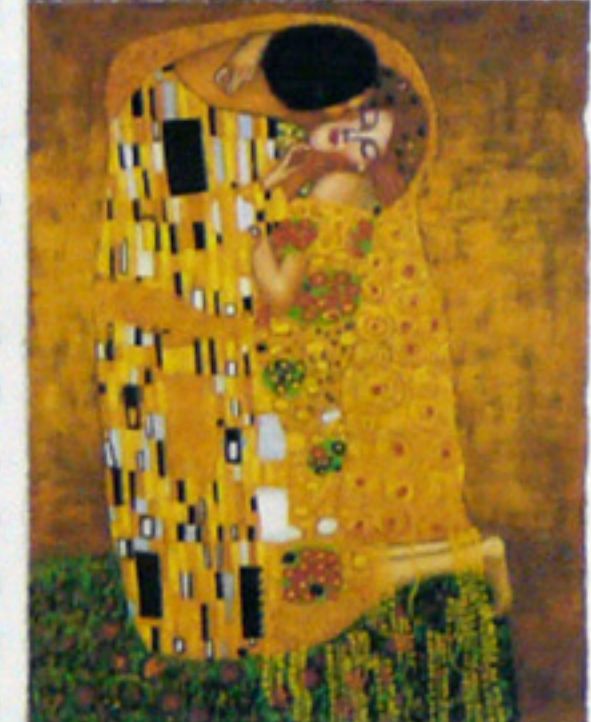
This painting is from the earlier composition page that I would like to explore more on. I think the soft technique in this painting would be good for my final piece. I also want to try contrasting the color scheme like before, from cold blue to warm soft colors.



The problem with this piece is that the use of technique in this painting is not refined and looks heavy. The composition in this piece is also very simple and is not very effective and doesn't express any strong impact on the emotion captured in this piece. I would like to bring more imagery into this composition and exaggerate more on the body language so it doesn't sink in the tree image and so it has more emotion that will show clearly the story that is concealed in the image.



'Beech forest' 1902



'The Kiss' 1907-1908 Gustav Klimt

Another artist I would like to bring forward is Gustav Klimt. My first outcome for my idea was a response to Klimt's 'Beech forest'. I like how the trees as they go towards the background further away the trees gets smaller and the trees disappear merging with the distance, which I think is fascinating to explore. Although Gustav's style is defined and very vivid, I want to experiment on how the trees as it goes to the back it merges and gives off the subtlety towards the viewer so it looks more dramatic. Klimt also has interesting technique in his works, how he combined figures together, like for example in 'The Kiss', the way they merge together reveals the intimacy within the painting and I want to emphasize on that.



This is a response I did to Klimt 'Beech forest' where I have combined my response with my idea for my final piece. I find it very interesting how the trees just go towards the distance, so I try to do my trees using watercolor which I will fade the trees into the background instead of doing it one by one, so it will create the subtle softness and mysterious feel in the piece.



This page is focused on development of the birch trees where I want to experiment on the shape and color and structure of the birch trees. This experiment I did over though very simple looking it is of how I'm going to put the trees in my final piece

\* Pictures taken by me as I want to explore on the structure and colors of birch trees







This painting is a response I did to artist James Chu Cheok San painting 'winter commences'. I really like how different tonal value determine the different distances between the trees in front and the trees in the background. It is interesting how the trees subtly disperse to make a very delicate soft painting. James has also chosen to do a panoramic scale which makes the whole composition very vast and wide. My response; I added some warm colors to make the painting more lively and has an interesting twist to it. Although my painting is not on panoramic scale, I have taken the idea of the tree subtly disappear towards the background.

James Chu Cheok San 'winter commences' ↓



Linking to my response to James, I will combine the trees with the figure of woman in the foreground because this will add emphasize to the image I'm trying to convey. The way I want the painting to be soft, delicate and subtle so it can reveal the figure's emotion whilst concealing the story hidden, the trees as background will highlight the expression.



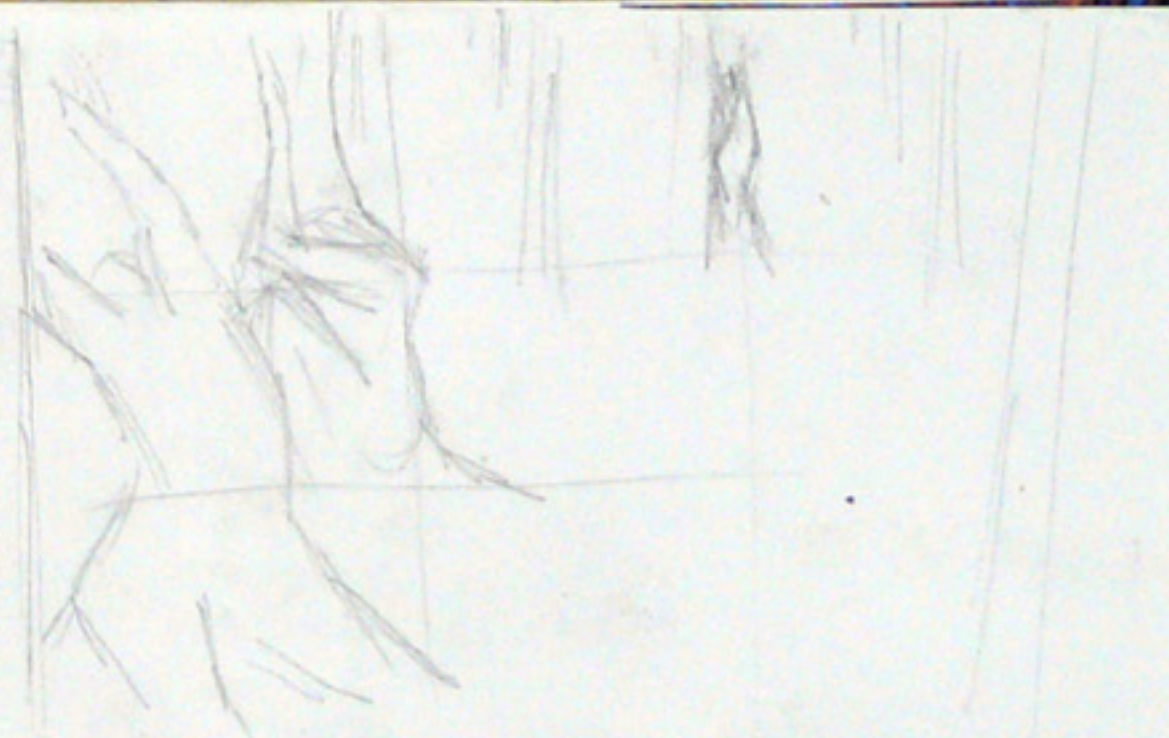
I'm exploring on how I can apply the background and the colour, whether I should fade in the images around the body or make them refined. and if warm colours is needed.



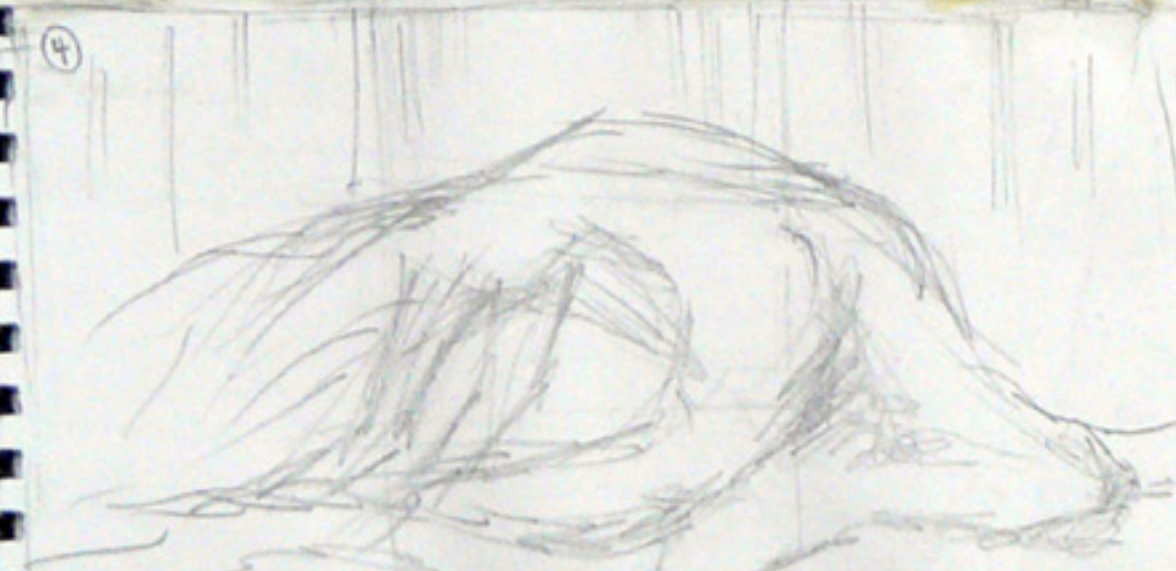




## Compositions



I am deciding whether I should put leaves on my final piece, like the bird tree piece. This might bring life to the painting and will have more depth.



This composition I took from my other experimentation, but I want to try with water, color and some background for contrast.



This composition I find interesting because I can see the mystified distance on the less busy side where the trees subtly disappear into the background; this gives great effect on the painting where it balances with the figures in the foreground.

I have chosen composition 5 as my final piece as the composition looks refined, where all the images fit together to create a final outcome. I've chosen this because this composition has balanced in a way where everything is put; the spaces and the busyness balance each other as I try to create the effect of busyness on the left-hand side of the page where it focuses on the figures and it spreads out as subtle softness on the right.





Klimt is one of the artist that has greatly influenced the background for my new final piece. His work 'Beech Forest' inspired my idea in the way that the tree goes towards the background. Although I didn't apply Klimt's technique of painting the trees, I picked up the idea of how the trees gets thinner as it goes further back, which creates the distance. This creates the mystifying subtle image that compliments the tree figure in the foreground. I have also applied the color scheme Klimt has used where it is natural and earthy, but it also has that interesting mix and on the far left where Klimt used a warm tone to



James Chu Cheok San "Winter Commences" This painting is done in a panoramic scale, which created the vast and wide image of the scene, and this emphasize on the subtlety of the surrounding. I like how James has used interesting technique where the use of tonal value formed the different perspective between the foreground and the background. And this has influenced me to go for a wider scale paper. This can give more emphasize to the image which reveals the subtleness. I like how the dark color is more intense at the front and it gets softer as it goes further back. This conceals the scene lies behind the foreground



The idea I took from artist Kristin Kane is the way she applied the textural designs on her paintings and how the structure of the tree captures the mood of the figure merged in it. And this reveals the sensuality of the paintings.



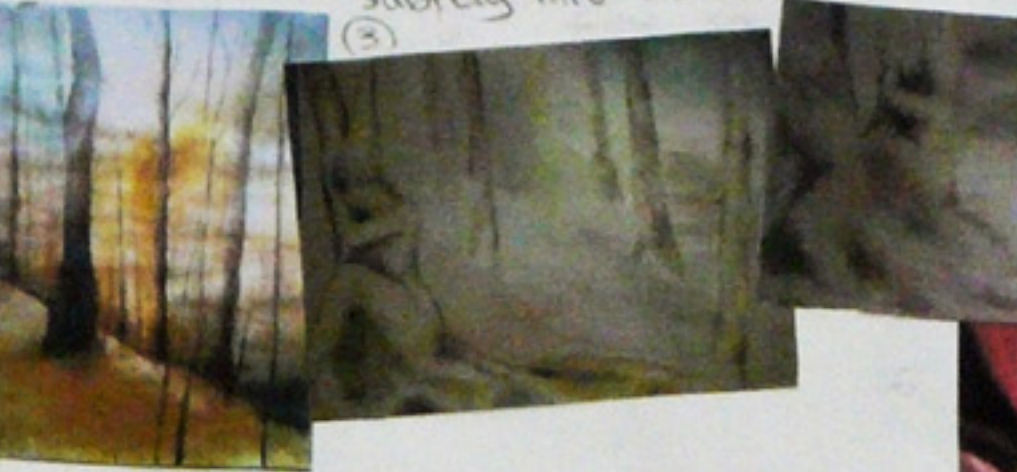
I have not like the colour scheme Kane has used in her works as they are very vivid contrasting the idea I have which goes towards more subtleness where it adds to conceal or reveal the message in

Beech Forest  
Klimt, 1902

Development Stages



I have done a few developments with different mediums and techniques so that my final will be more refined. The first stage of this idea is that I have used heavy dark colour scheme on a very simple composition, which I think my technique is slightly weaker so I decided to go for a much softer and lighter palette, this includes experimenting on the final idea. Also in the last final piece the more focused image in the piece is the figure where in which the tree comes subtly into the figure where as in this final piece the dominant image is the trees where the figure of women slowly merge subtly into the trees



K Madison Moore 'Flower of Venus' 'feeling blue'



K. Madison Moore has influenced my idea of doing figures to combine with Klimt's trees in my final piece. Moore has influenced my idea by in the way she has used dramatic beauty of natural form to create emotion, which in my final piece is vital; how the body is positioned where it emphasizes the emotion on how the use of body language

can conceal and/or reveal a person's emotions. I've chosen to do a woman figure as an image of a woman is stronger in emotion and the beautiful figure of a woman is complimentary to this image of the strong expression a woman can project. Even though Moore explores the use of heavy colours, I decided to use softer and lighter color more so it will be more subtle.

I really like the outcome of my new piece as it has more interesting composition to look at. In my previous outcome, it is more focused on the figure expression where viewers subtly became aware of the tree revealed within the figure. In this final outcome, the scene is more dominant on trees where the figures are concealed beneath them where they slowly reveal the body as you look into the surrounding.

Personally, I find it very intriguing the way Madison Moore has merged a figure and an object of nature which represent something about their mood and feelings and situations for example the woman figure merges with the flower. This is where my first idea came from. These merges can emphasize emotions felt by the figure. My final idea of the tree combination with women is based on the idea of body expression.

Making Connections

I really like the way Boccioni utilize his soft technique with soft pastel drawing this woman. This has inspired me to do very soft and delicate technique on my final piece while painting the figure.



Lisa Fifield's paintings uses literal combination when she merge the tree and figure together which is very simplistic. Even though my final piece is more complex, I like the idea Lisa has used where she creates meaning within her painting. For example in this painting, freedom is portrayed, whereas in my painting I captured the opposite meaning where I want to conceal and reveal the expression of inescapable and isolation.

Lisa Fifield's paintings uses literal combination when she merge the tree and figure together which is very simplistic. Even though my final piece is more complex, I like the idea Lisa has used where she creates meaning within her painting. For example in this painting, freedom is portrayed, whereas in my painting I captured the opposite meaning where I want to conceal and reveal the expression of inescapable and isolation.





